

# SCALE-MAIL

## Contents

### Bulletin Board

ZEP AIRCRAFT JIG (LARGE)  
MSJ03

MIKROMIR'S 1:48 De HAVILLAND

Panzerwerk Design Sherman T-48  
tracks with Duckbills

On the table

## NEXT MEETING

7.30 pm Tuesday 18/4/2023

Royal Oak Bowls

146 Selwyn St, Onehunga

## COMMITTEE

Chairman - Craig Sargent    Dave Fish  
Secretary - Brett Peacock    Lance Whitford  
Treasurer - Mark Robson

EDITOR: Lance Whitford  
e: lancewhitford@hotmail.com

EMAIL: ipmsauckland@gmail.com  
WEB: ipmsauckland.hobbyvista.com  
YAHOO:  
groups.yahoo.com/group/ipmsauckland

FACEBOOK:  
[https://www.facebook.com/groups/  
ipmsauckland](https://www.facebook.com/groups/ipmsauckland)

## From the Editor

It's AGM time again! Hopefully this will be short and sweet as usual. Alongside that we'll have a bring, buy and swap night so feel free to bring along any surplus kits and other modeling related stuff that you are looking to part with.

Don't forget fees are due for the 2023/24 year now so see overleaf for payment details.

I will be out of the country in May and will be unable to produce a newsletter so we may just end up sending out a meeting reminder next month.

We have received news that the Waikato Scale Modellers are holding their now annual one day competition on the 3rd of June. I really enjoyed this last year but sadly will still be away and will have to miss out this time. You can find full details on page 4 of this newsletter.

## IPMS New Zealand Nationals 2023 link

<https://www.facebook.com/ipmsnzns2023>



**IPMS NEW ZEALAND  
NATIONALS  
COMPETITION AND DISPLAY**  
29 SEP - 1 OCT 2023  
VENUE: ROYAL OAKS BOWLS, ONEHUNGA,  
AUCKLAND

**THE KOREAN WAR THE FORGOTTEN CONFLICT**

THE KOREAN WAR  
JUNE 25, 1950  
38TH PARALLEL  
COURTESY  
1ST CAVALRY DIVISION

# BULLETIN BOARD

**NEW MEMBERS AND SUBS \*\*\*\*\* 2023/24 NOW DUE \*\*\*\*\***

Subs for 2023/24 now due -see below for club account details or see the club secretary  
at the next club meeting.

Membership	Description	Cost
Full	Living in the Auckland	NZ\$45
Out Of Town	Living 75km or more from	NZ\$30
Junior	Same rights as full membership for those under	NZ\$25

**IPMS BANK ACCOUNT  
NUMBER**

**03 0162 0012960 00**

*Please add your name and details so we know who has paid!*

## EVENTS

### CLUB NIGHT EVENTS

IPMS Auckland Meet on the  
third Tuesday of each month at  
7.30pm

**Venue: The Sports Lounge  
Royal Oak Bowls  
146 Selwyn St, Onehunga**

**March 21st** This month we are going  
have a workshop on doing  
rigging and making aeri-

**April 18th** AGM and bring, buy and

**IPMS NEW ZEALAND  
NATIONALS  
COMPETITION AND DISPLAY  
29 SEP - 1 OCT 2023  
VENUE: ROYAL OAKS BOWLS, ONEHUNGA,  
AUCKLAND  
THE KOREAN WAR THE FORGOTTEN CONFLICT**

IPMS New Zealand Nationals 2023 link

<https://www.facebook.com/ipmsnznats2023>

# BULLETIN BOARD

## CLUB SUPPORT

The following retailers have kindly agreed to offer IPMS Auckland club members a discount on their purchases upon presentation of their current IPMS Auckland Membership card.

The discount only applies on selected product lines and remains at the discretion of the retailer.



**Modelair**

349 Dominion Road  
Mount Eden  
Auckland  
p: 09 520 1236



Cnr Market Rd & Gt South Rd  
Auckland  
Ph: (09) 520 1737

10% on kits and modelling supplies

Constellation  
**HOBBIES**

Unit 5/1 Greenwich Way,  
Unsworth Heights, Auckland.

Ph: (09) 441 3562

10% on kits and modelling supplies



**Merv Smith Hobbies**

27 Davis Crescent  
Newmarket  
Auckland

10% off most items on presentation of IPMS Auckland Membership Card.

---

**Avetek Limited**

Gwyn and Christina Avenell  
28 Lauren Grove, RD 2, Papakura,  
Auckland 2582, New Zealand.

p: +64 (09) 298 4819,

m: +64 (0)27 343 2290

e: [aveteknz@gmail.com](mailto:aveteknz@gmail.com)

[www.avetek.co.nz](http://www.avetek.co.nz)

New Zealand Master Agents for:

Auszac ECO Balsa • Bob Smith Industries - Cyanoacrylates and Epoxies • Airsail International Kitsets

---

# Waikato Scale Model Club Model Competition 2023

The Waikato Scale Model Club had a great first competition last year so we're doing it again for 2023. Usually we hold the model competition during & at the "Armistice in Cambridge" event in November. Our Model Competition and Show on Saturday 3 June at the Hamilton Cosmopolitan Club. There will not be a model competition at Armistice.

We will still attend Armistice in Cambridge and have models on display but will focus on the "Kits for Kids" and have more of a fun & social aspect to the event. So bring your models to display, bring the kids to have a go at building a kit and come chat with everyone. Our members will still be there, helping with the kids, building models, etc.

To enter our competition there is a \$5 per model entry fee, with a max of \$20 per person.

We have made up a bunch of trophies so bring your best models and you might win!

We will also be running a raffle so you can be in to win there as well.

If you would like to donate a model for the raffle please get in touch with Hadley @ waikatoscale-modelclub@hotmail.com

We hope to see you then!

## Info update

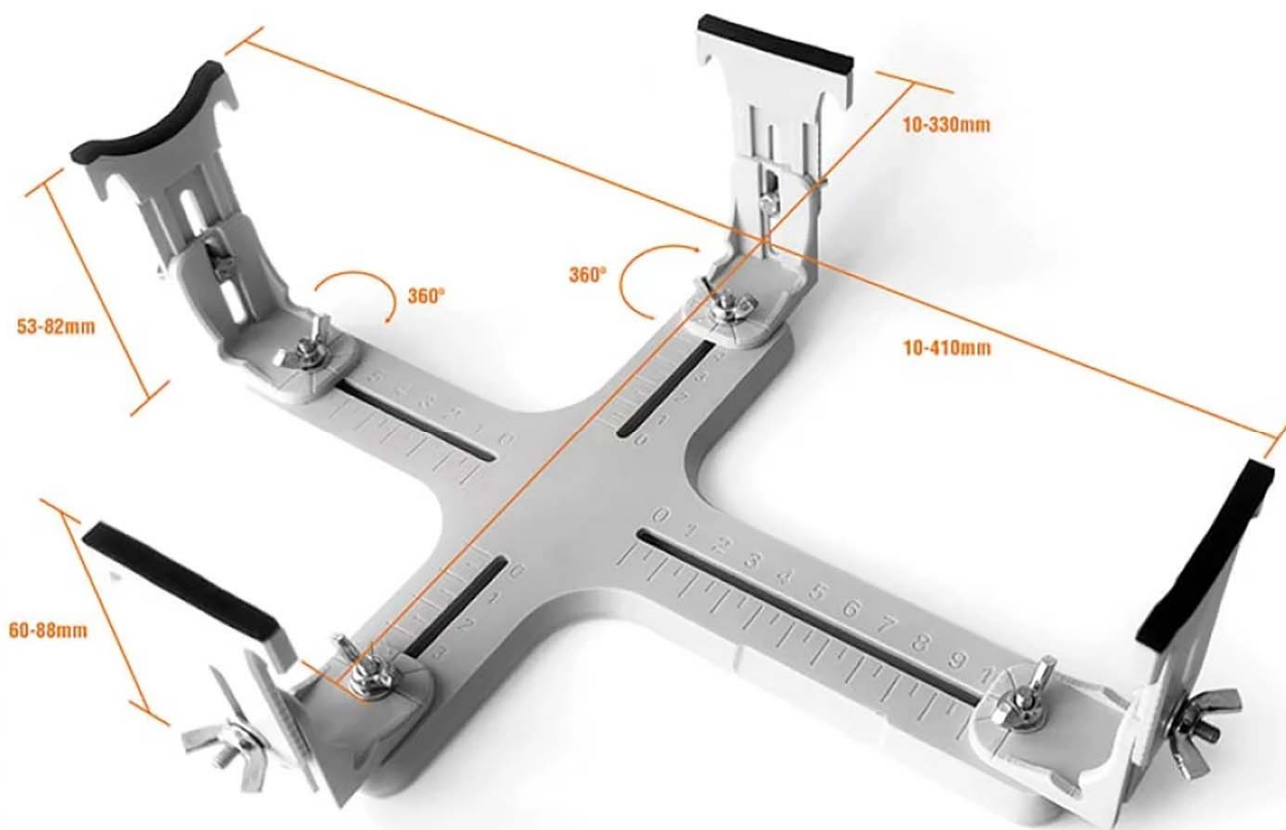
- Entry to the model competition will be between 9-12pm
- Doors open to public at 10
- Prizegiving is at 4pm
- 2nd & 3rd will be placed on tables while 1st is presented at prizegiving
- If you win, please put your trophy beside your model so others can see who won
- Event finishes at 5 so you may start packing up AFTER 5

## Categories as follows:

<b>Plane Category</b> A1 Aircraft 1/72 and Smaller – Prop A2 Aircraft 1/72 and Smaller – Jet A3 Aircraft 1/48 Prop A4 Aircraft 1/48 Jet A5 Aircraft 1/32 & above - Prop A6 Aircraft 1/32 & above - Jet <b>Naval Category</b> S1 Ship - 1/500 & Smaller S2 Ship - Larger than 1/500 <b>Military Vehicle Category</b> M1 Military - 1/72 and smaller M2 Military - 1/48 and smaller M3 Military - 1/35 and Larger <b>Diorama Category</b> D1 Diorama - Air - Military D2 Diorama - Land - Military D3 Diorama - Sea - Military D4 Diorama - Civilian D5 Diorama - Vignette	<b>Junior Category</b> J1 Junior - All Scale and Types <b>Figures Category</b> F1 Figure - Under 120mm (1/16) F2 Figure - 120mm (1/16) and Larger <b>Science Category</b> SF1 Science - Fiction SF2 Science - Fact SF3 Si-Fi / Si Fact Diorama <b>Automobiles Category</b> C1 Civilian - Road Vehicles C2 Civilian - Racing (F1, NAS, Custom) C3 Civilian - Truck C4 Civilian - Motorcycles <b>Helicopter Category</b> H1 Helicopter - All Scale and Types
---	---

All details and categories are subject to change at any time

## A NEW TOOL FOR THE ARMORY... ZEP AIRCRAFT JIG (LARGE) MSJ03 By Pete M.

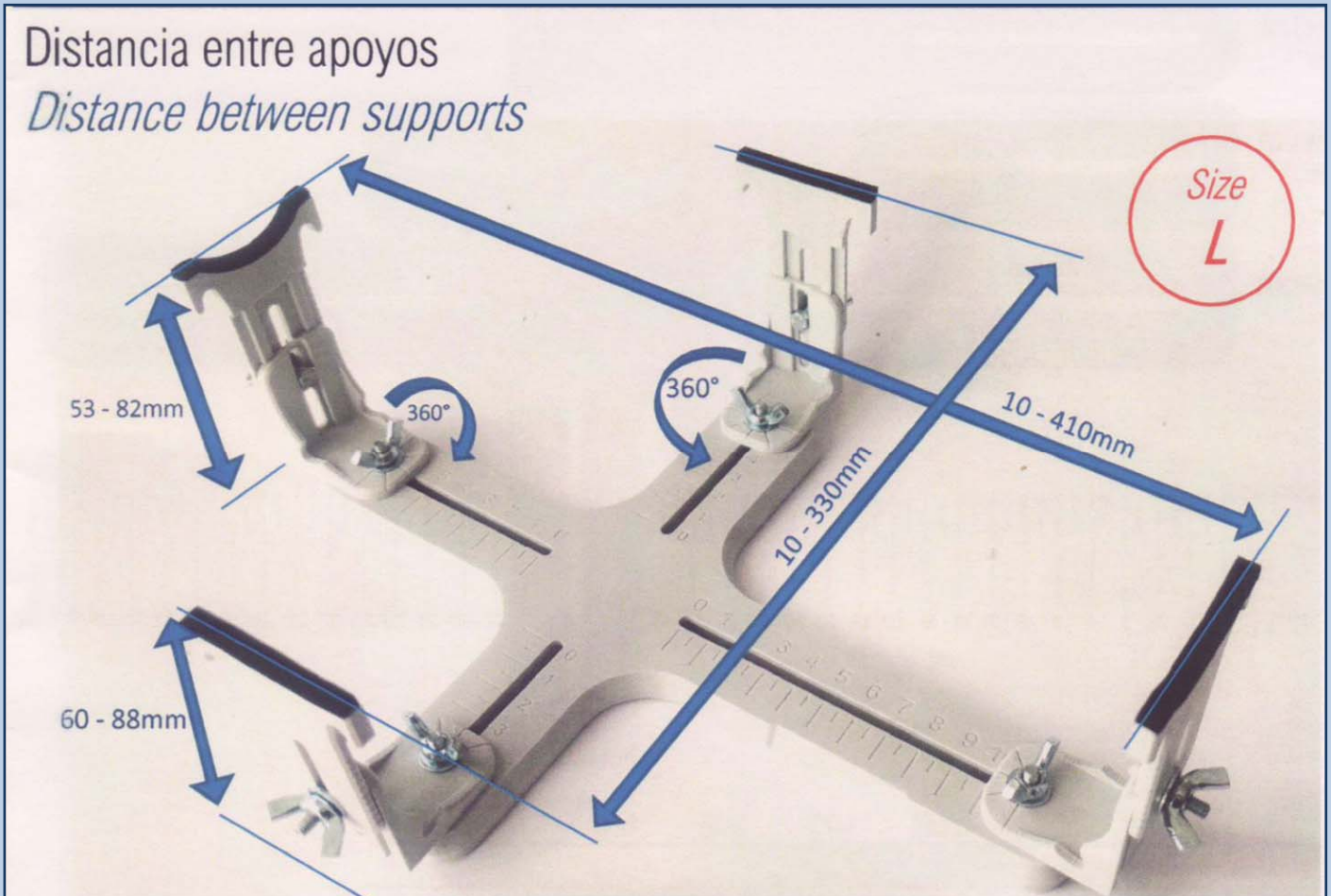


Support for the assembly, painting, treatment and transport of large-scale aircraft. Light, rigid, high quality and ecological.

- Applicable to 1/32 and 1/24 scales, other scales are possible depending on the size of the model. For other scales, check out our other available sizes.
- This stand has the dimensions of an A3-size cutting mat and allows you to work comfortably and safely on the model.
- Supports movable longitudinally and in height. 360 ° swivel supports. Ruler marked on the arms of the base, height reference indications on all supports. Marks for reference of the rotation at the base of the supports.
- Simple assembly! No need to use glue or trim anything. Maximum assembly time: 3 minutes.
- Includes stickers to put your name or pseudonym on the base, for when you take photos of your plane. Includes non-slip silicone drops for the base and elastic bands to hold the model for transport to exhibitions, contests, etc. (*From the instructions*).






For years now, I've been using assorted paint tins, bottles and the odd hunk of balsa wood to support my models during assembly, painting and decalling. Of late this has become a bit hit and miss with my shaking hands due to mild Parkinsons disease so when this item popped up in one of my email feeds, I 'bit the bullet' and obtained the larger of the sizes offered (small, medium and large) as it will obviously close up to do from 1:144 scale and open up to 1:24<sup>th</sup> scale.

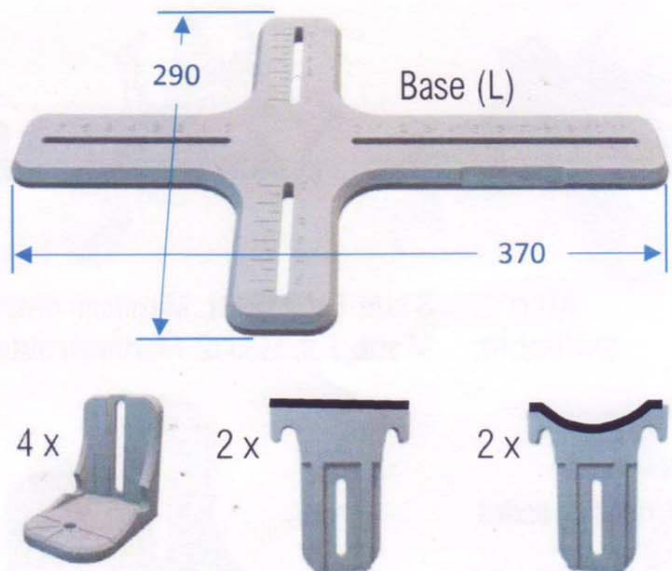
Distancia entre apoyos  
*Distance between supports*



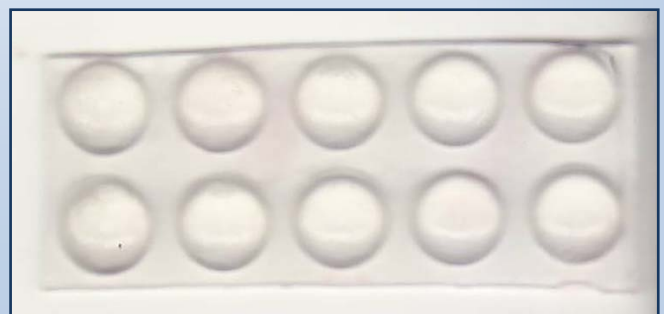
Four uprights are supplied, two with a curved upper surface to hold a fuselage, and two with a straight top surface to support wings etc. All these have a soft foam cover piece on the top surface to protect the plastic/resin etc. These are attached to the base with 'L' shaped supports that can be swivelled around to suit. Each of these is held with a bolt, a washer and a wing-nut and

Componentes  
*Parts*

- 8 x 
- 10 x 
- 8 x 
- 8 x 
- 8 x 
- 2 x By (your name)

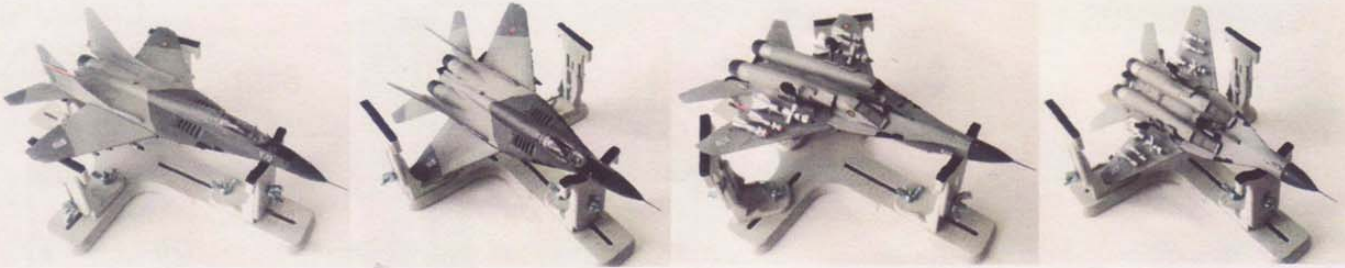


The uprights also include a hook at each end to which a rubber band (or silicone bands as supplied in the kit) or tape can be hooked into to secure the model. 10 silicone anti-skid pads are also supplied to attach to the base to stop it moving around on the work surface.



The kit comes in a sturdy card box in which it can be stored dismantled when not in use. This is a very well made unit, and should give one years of service.

The 3 sizes of jig are shown in the picture below. I'm sure there will be one that suits most modelers!



Also available:

**S size.** Ref. MSJ01. Maximum distance between supports: 185 x 255 mm

**M size.** Ref. MSJ02. Maximum distance between supports: 230 x 310 mm

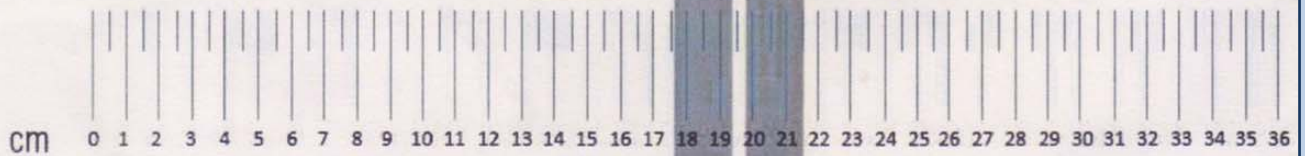


Aircraft jig series

Ref. MSJ01  
*S size*

Ref. MSJ02  
*M size*

Ref. MSJ03  
*L size*



Scale 1/144 1/72 1/48 1/32 1/24

MSJ01 *S Size*

MSJ02 *M Size*

MSJ03 *L Size*

Made in E.U. by ZEP

Note: ZEP also do a range of these supports for automotive subjects, and AFV's. With a few small additions, the aircraft jig can also be adapted to use for these other subjects.





Finally after years of waiting, a modern injection moulded DeHavilland Venom in 1:48 scale has arrived via the Ukrainian firm of MicroMir. Previous kits were the 1:59 scale Glencoe/Lincoln kit (1980's), The Aeroclub mixed media kit (vacform, injection and white metal) in the late 1990's, and the Classic Airframes kit in 2007.

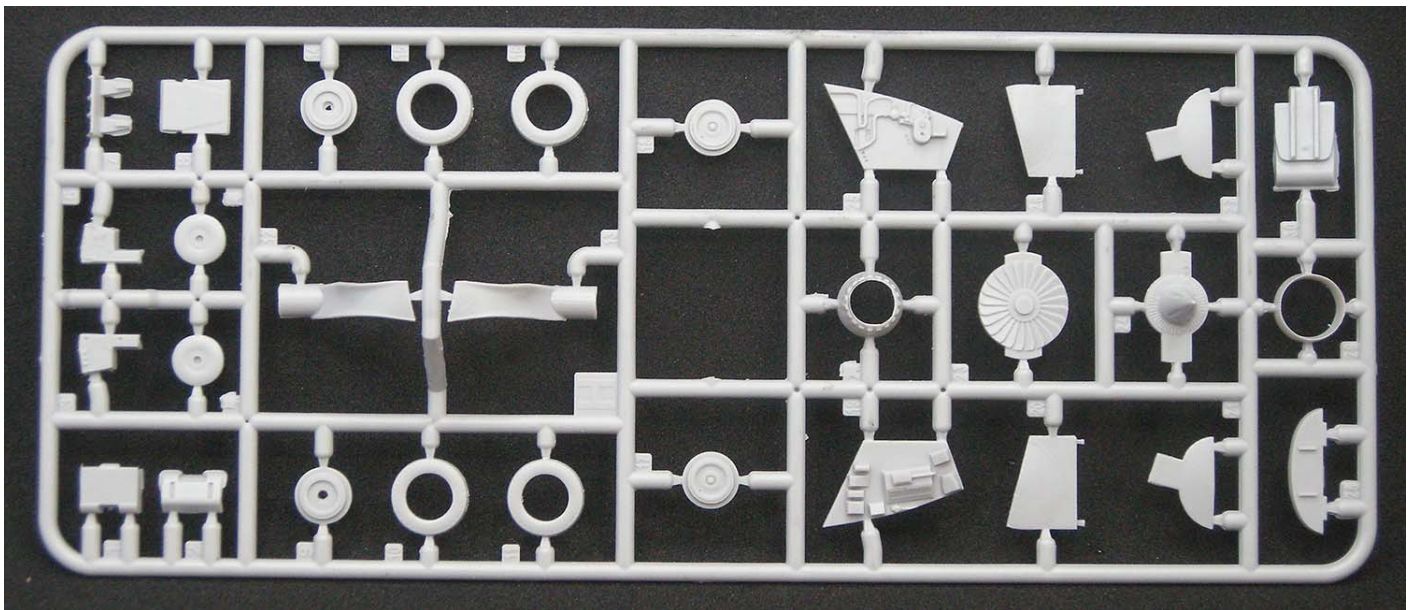
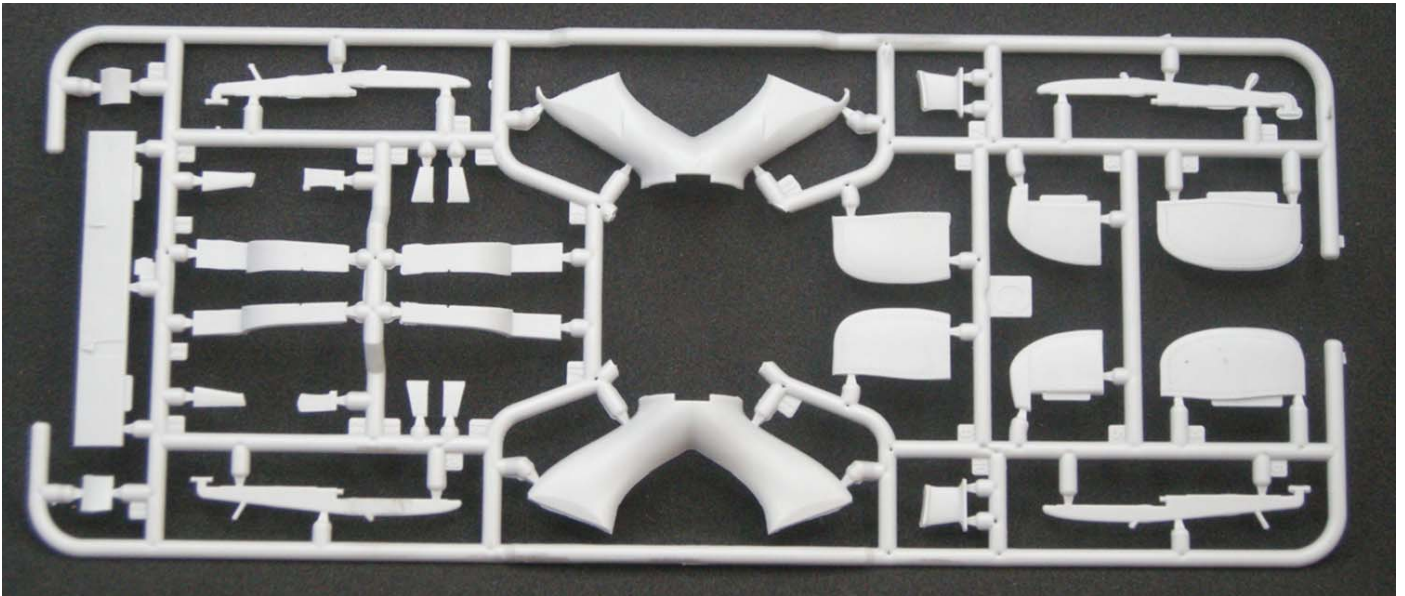
**BUT**, what is in the box (despite the box art showing a Venom FB.1, and initial pre-release description) is all the parts for a Venom FB.4! There is presently a long thread emerging on Britmodeller.com regarding this kit and detailing all it's perceived flaws so I won't go into all the gory details here!!

<https://www.britmodeller.com/forums/index.php?/topic/235089778-148-de-havilland-dh112-venom-by-mikromir-released/page/3/> Start from about halfway down the page.

Eight sprues come moulded in light grey styrene, one in clear with the cockpit canopy, wind-screen and landing light lens. A small PE fret covers more details with a photo backing sheet for the instrument panel (allegedly that of a Swiss Venom), a pre-cut masking sheet for the cockpit canopy and screen, and a small decal sheet covering 2 RAF examples. Note, there is quite a lot of flash on these sprues, but most will easily be dealt with a sharp scalpel or knife.

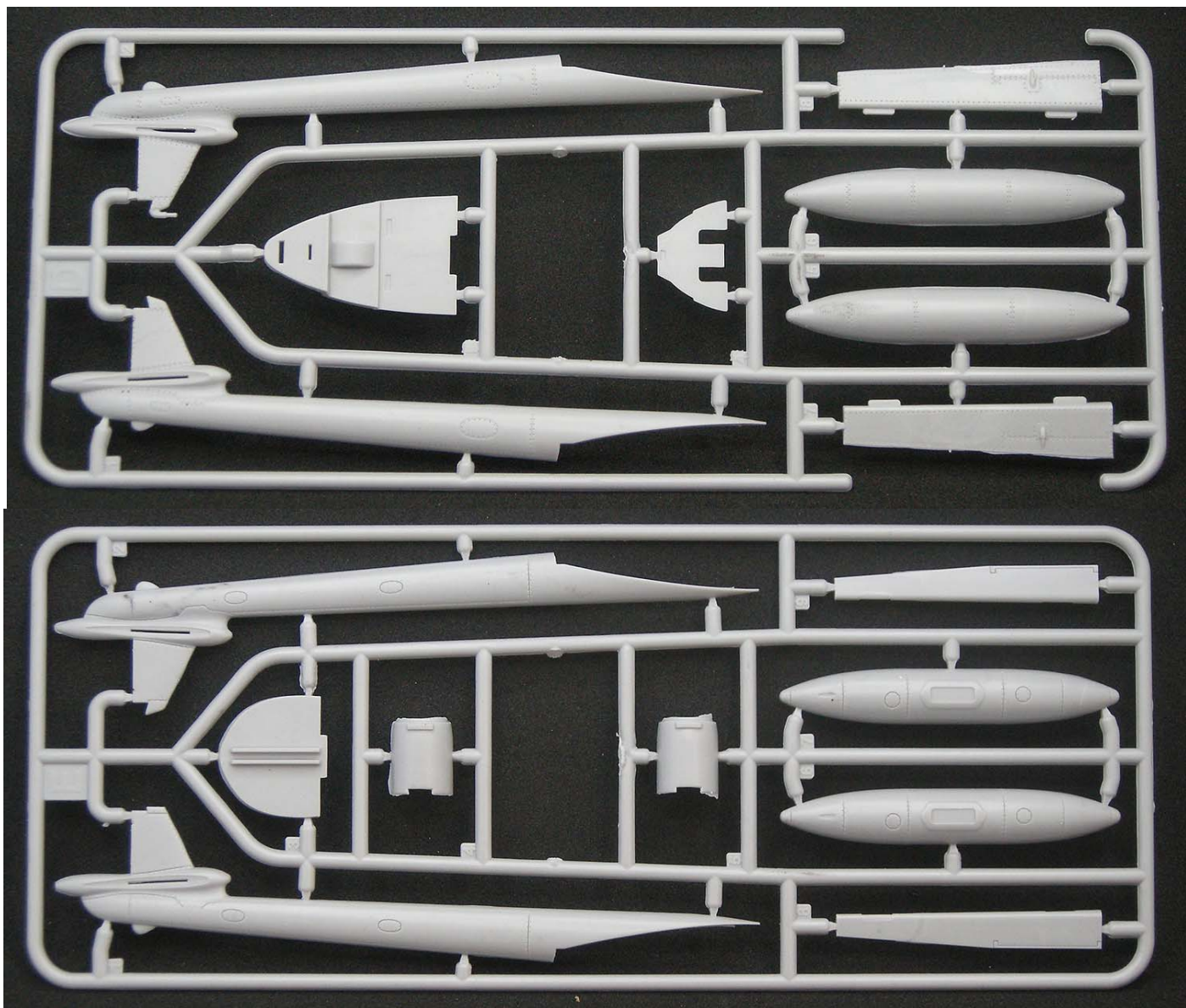


The surface detail is what I would term 'soft' but an attempt has been made to replicate most of the panels and rivet lines (all recessed and very fine). My first thoughts on un-boxing this kit was that of a decade old Sword or Special Hobby low pressure moulding. There are also no locating pins so careful assembly will pay dividends.



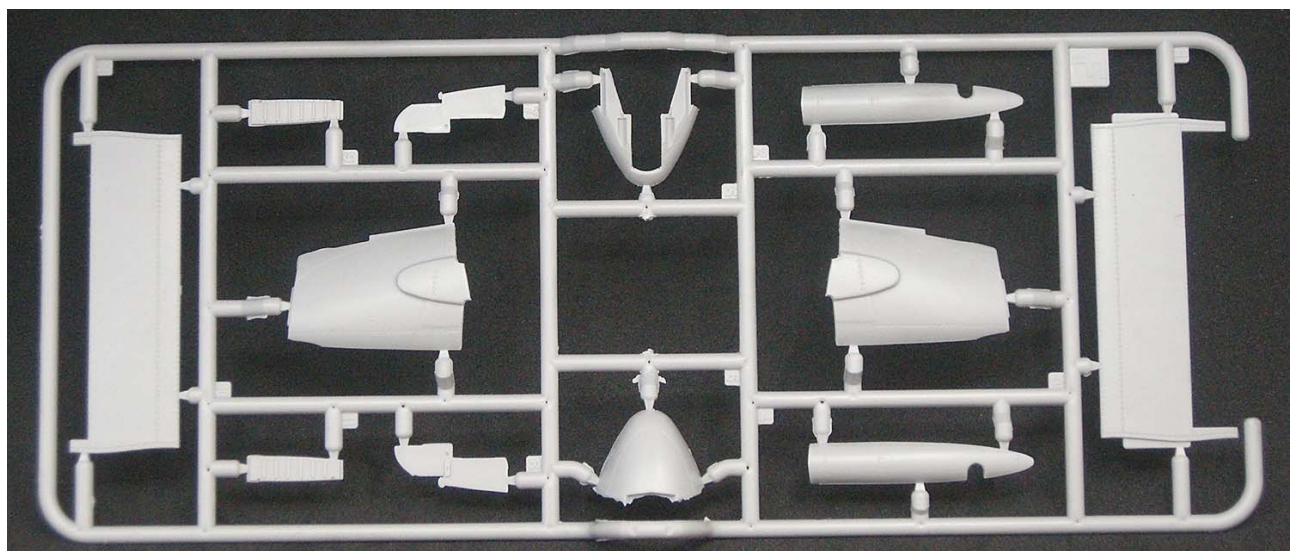
MicroMir have given us a good representation of the intake trunking (mostly unseen within the wings and fuselage) and the forward impeller. The exhaust pipe includes a simplified 'cone' without its supporting vanes but have given a representation of the rear turbine blades.

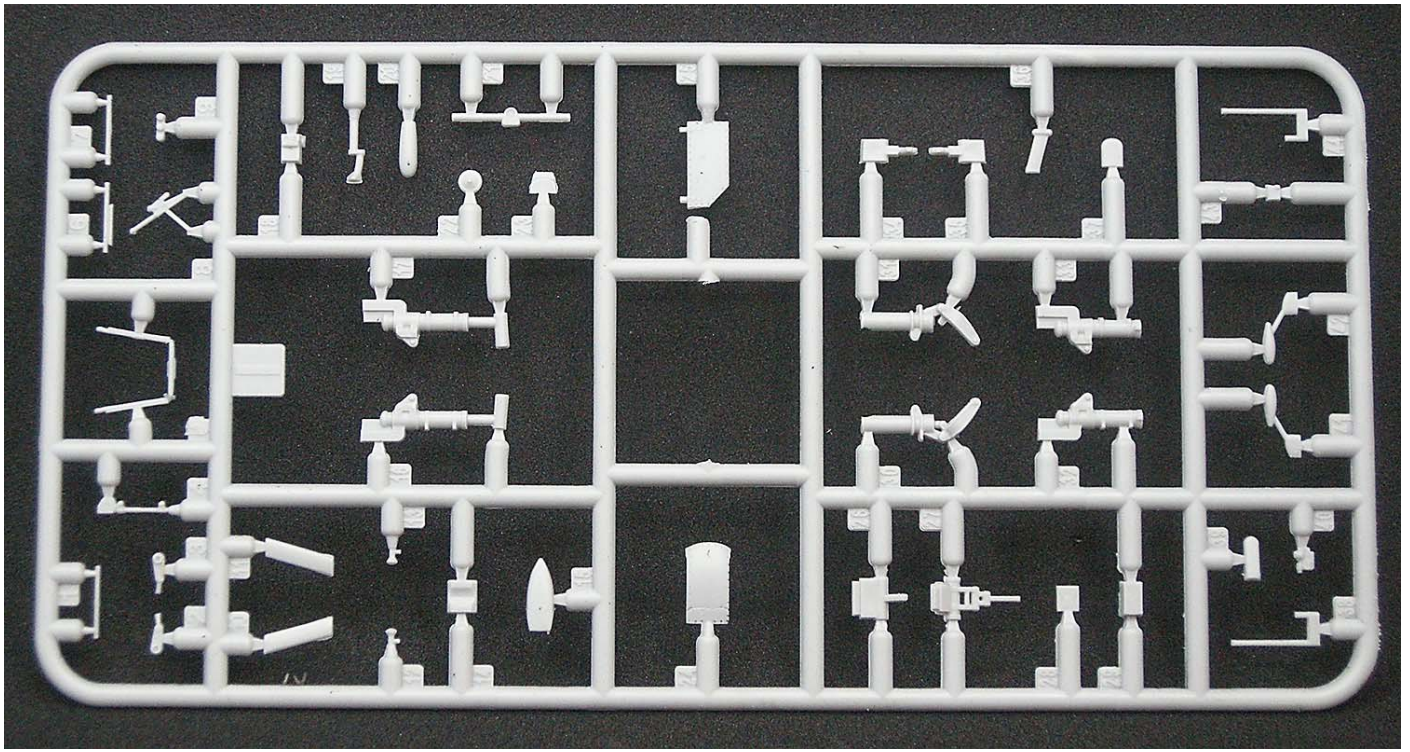
The tail booms have been done a bit differently to all the other kits, in that they include the upper wing structure fairing and not a butt joint along the panel line as used on all the others! This should make it a bit easier to keep the booms aligned during construction.



The internal cockpit details include much of what appears in the real aircraft but as noted above, the PE and film instrument panel is not correct if doing an RAF operated Venom.

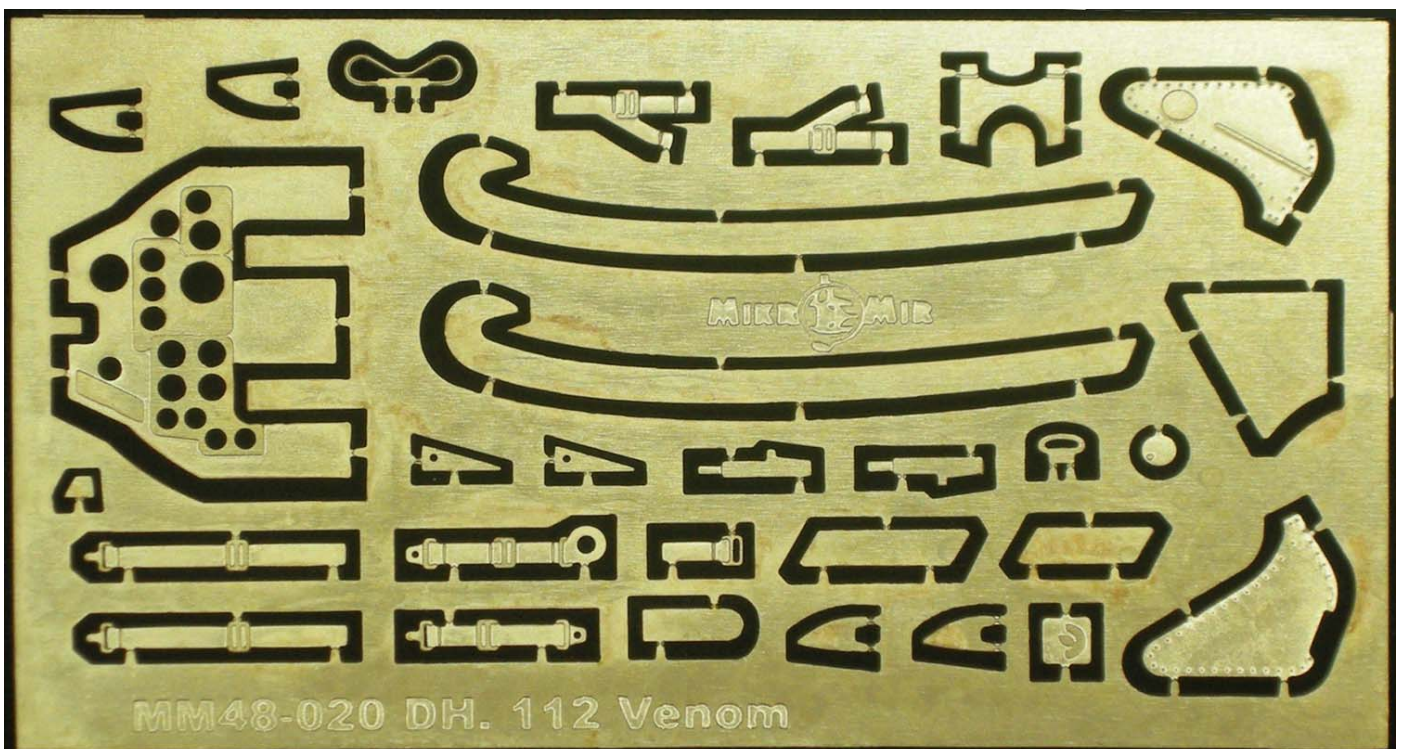
The 'bang seat' is made up from a styrene base with PE sides and detailing such as the belts etc. There are some very nice resin seats out there, but I personally feel that the kit one with careful assembling and painting would do the job just as well as not much can be seen in the 'coal hole' of either a Vampire or a Venom (think black on black)!!! Mind you, the screen and canopy is very clear and thin.



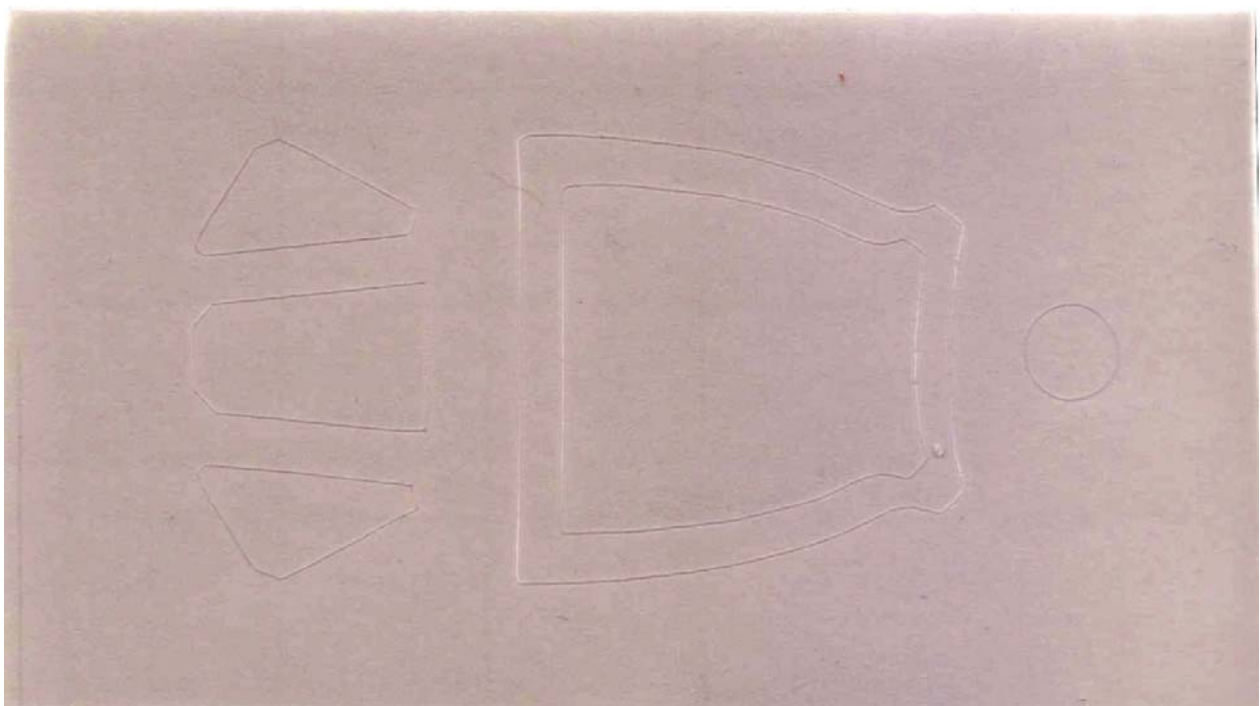


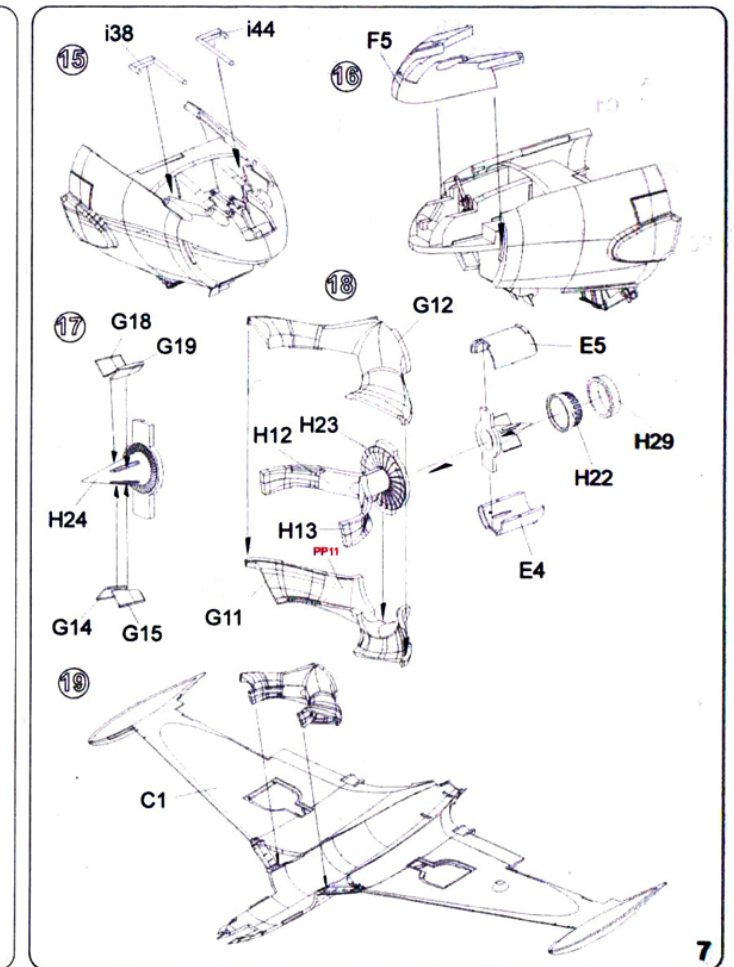
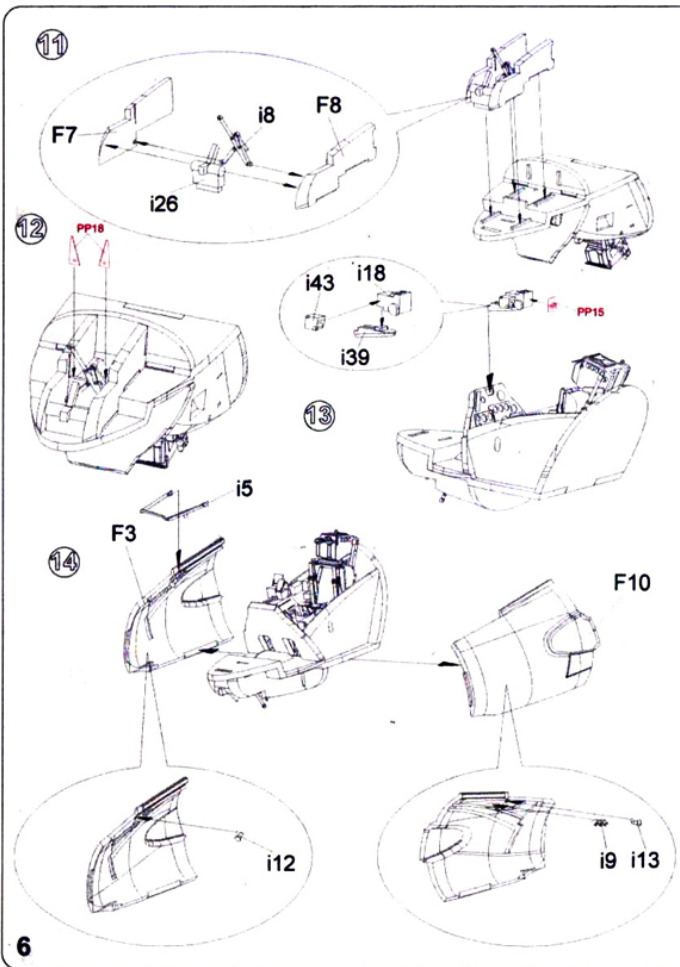
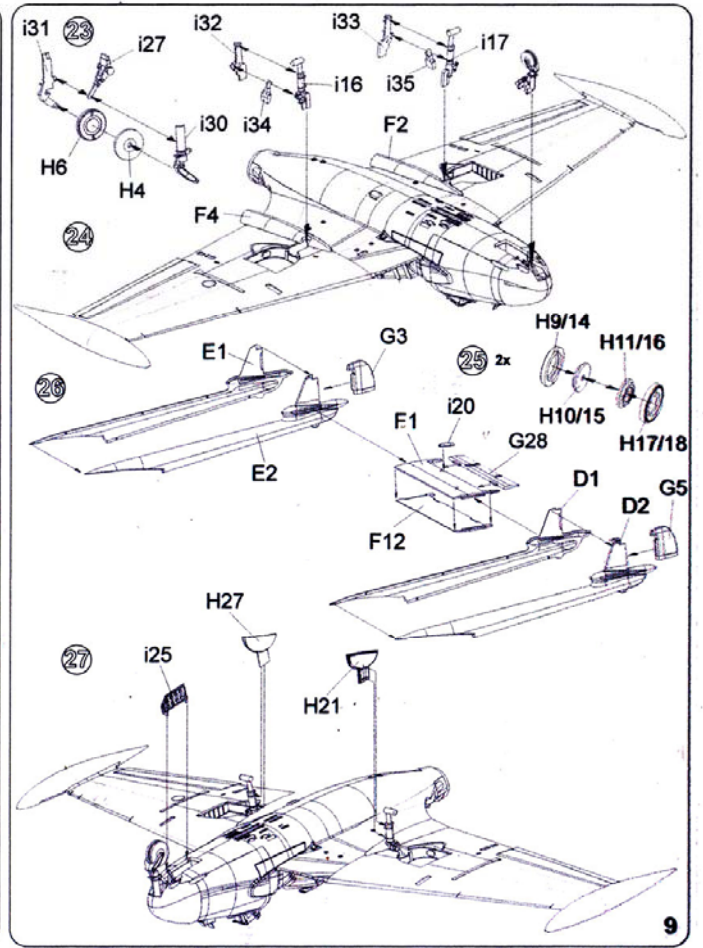
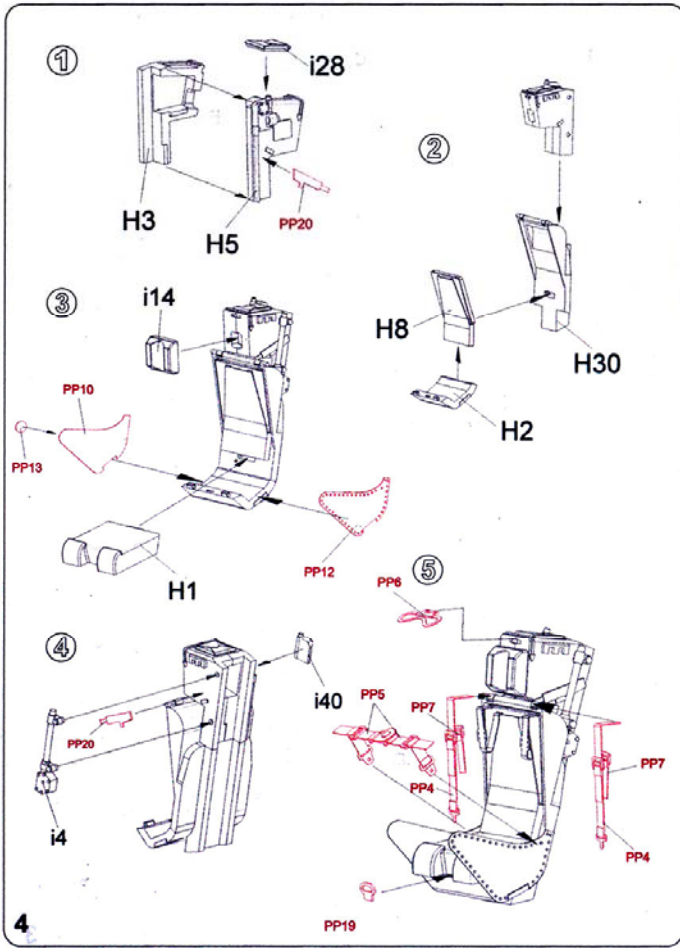
The wheels come as multi-part mouldings (thankfully no vinyl/rubber tyres) and the undercarriage legs are nicely done.

The PE fret other than the IP panel, includes most parts to build up the seat, the seat belts and also includes many smaller detailing items. The strakes for the upper wings are also on the PE fret.

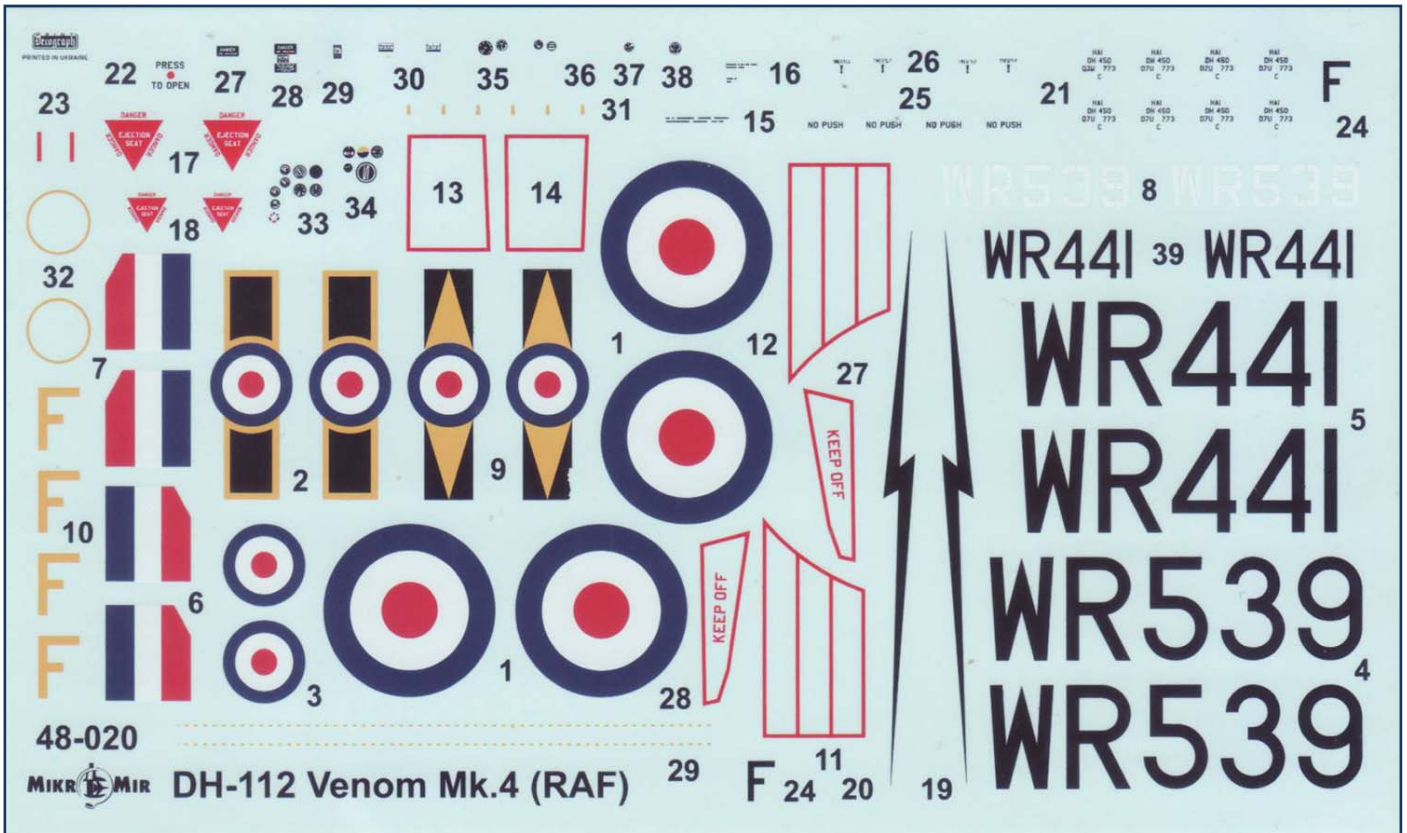


The final part is a pre-cut mask for the cockpit canopy and screen, and what might be a wheel mask. These are not mentioned in the instructions which come as folded A4 sheets. These are pictorial only and have no colour call-outs so one will have to check ones references.





The small decal sheet includes 2 RAF FB.4's WR536 of No.28 Squadron based at Kai Tak in Hong Kong in 1963, and WR441 of No.11 Squadron based at Wunsdorf in Germany in 1957. Basic stencil data is supplied along with instrument decals should one decide to detail the base plastic instrument panel.



Overall, if you want a Venom FB.4 this supersedes all the previous efforts, but will still require some extra work. To build an FB.1 such as those leased by the RNZAF in Malaya, much work will be required to alter the tail fins and rudder assemblies, and modify the larger chord ailerons to the narrower ones used on the FB.1.

For further information, I would suggest looking up the Britmodeller thread I mentioned above.

Note: I messaged Hannant's regarding what is in the box, and to their credit they have now modified the wording in their description for the kit. Well done to Hannant's and I hope this keeps other prospective buyers aware of what is in the kit!

# Panzerwerk Design Sherman T-48 tracks with Duckbills

By Lance Whitford



Panzerwerk Design are a relatively new comer to the 3D printed track scene and I was keen to try their Sherman offerings after a pretty good experience with the Heavy Hobby 3D printed T54 E1 Sherman tracks I reviewed a while back.

Like Heavy hobby the parts come ready to use with no sprues (or whatever the correct term is for the myriad of stalks the support 3D prints.) to remove. The details are superb on all the parts and first impressions were excellent. Panzerwerk have taken a different approach to Heavy Hobby in the parts design in that they have pins on the connectors which push into holes in the track pad while Heavy hobby have holes in the connectors and pins on the pads.

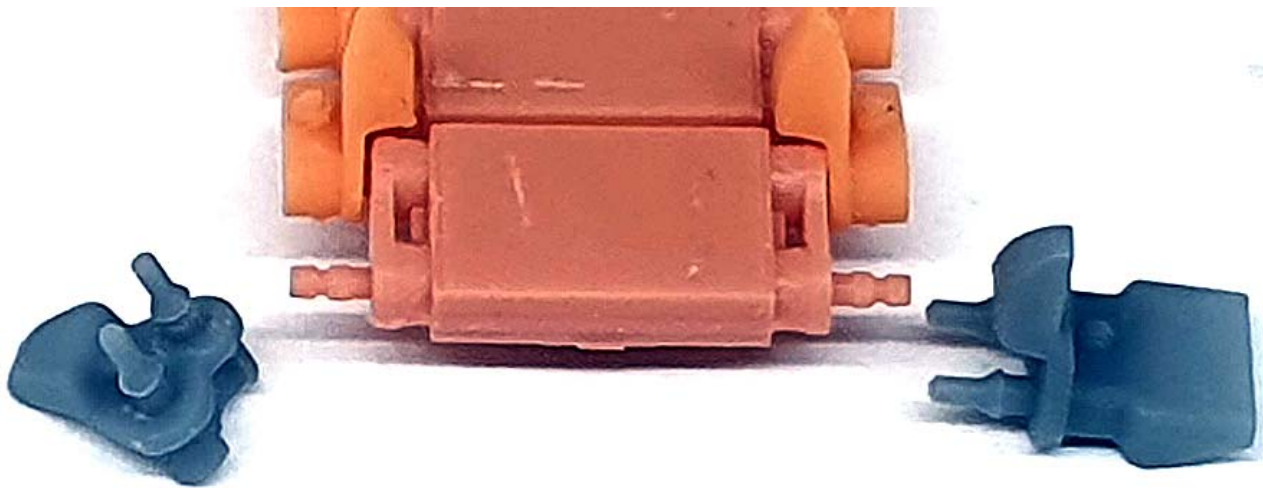
The Panzerwerk pins have a short barbed section that fares into a fine point. The barbs are designed to lock into a rib or groove inside the track pad holes. The fine point really only helps guide them in as there is little or no strength there. An extra hand is a big help with assembly and I used the save wooden jig I made for use with the heavy hobby tracks. I assembled the tracks in modules of 10 and then joined the modules together to form longer lengths. 200 parts of each type of part are supplied with each type in their own plastic box.



The parts and their containers are shown below



The photo below shows some assembled Heavy Hobby track with a couple of Panzerwerk connectors in the foreground for comparison. The heavy Hobby pins look quite dainty compared to Panzerwerk's design which turned out to be misleading in terms of their effectiveness



During assembly I noticed that the fit of the pins was inconsistent. Some went in very easily, some required a little pressure and other felt like they would not go in at all. Initially, I broke a few pins off and I also found that it was more difficult to apply pressure with the duckbills. I learned that using the end of a piece of wood, the same as went into my jig, as a pushing tool made things easier and also was better at applying force in line with the pins which is critical to not breaking them. I started to find a few issues when I began assembling the 2 full lengths. Some of the pins just fell out and sometimes this would cause the opposite side to swing out which then in turn snapped the pin on the other side the track would snap off. This became quite tedious as the track pads had to be drilled out to remove the remnants of the broken pins.

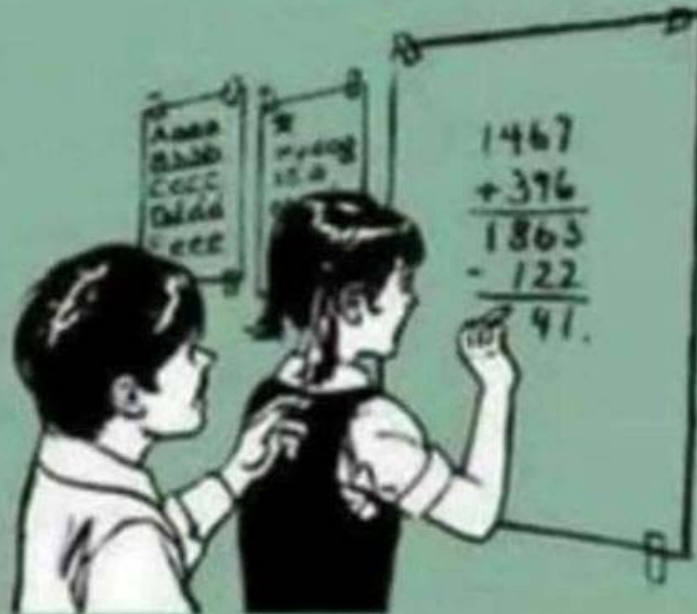
When drilling out I was careful to use an undersized bit so as not to damage the trackpads. I decided to try white glue when replacing the loose pins. This worked quite well in that the glue dried hard, filling the space but not adhering to the resin and thus allowing the links to articulate. I used a Selleys handy man type glue that dries waterproof. I can't remember how many connectors I ended up gluing or how many connectors were written off but by the time I had finished I only had a few connectors remaining. I found the attrition rate to be significantly higher than with the Heavy Hobby tracks. I think that there is a very fine degree of variation in the individual parts some pins went in easily some with a small amount of help and the odd one that snapped off when trying to insert. I think when I had a slightly oversized hole and undersized pin the connectors were prone to falling out. Now this is speculation on my part as without running a micrometer over a bunch of parts you would not be able to discern any visible variation.

In the end I have 2 runs that fit the longer hull of a Sherman VC and look really good. No complaints about the detail or the fit either as they went on fairly easily. I will have to handle them with great care when I paint and weather them. I would like to add that I have seen examples online where other modellers used Panzerwerk tracks and had a lot less trouble than I did so maybe I was just unlucky. On reflection, I had a very easy time with the Heavy hobby tracks which were done and dusted in a couple of hours. Conversely I have seen feedback from other modellers who have had difficulties with the Heavy Hobby tracks so who knows. What I do know is that there is huge potential for 3D for tracks and other aftermarket accessories and things will only keep improving.





**Billy has 17 plastic model kits.  
He just bought 3 more.  
What does he have now ?**



**Happiness.  
Billy has Happiness.**

# On the Table







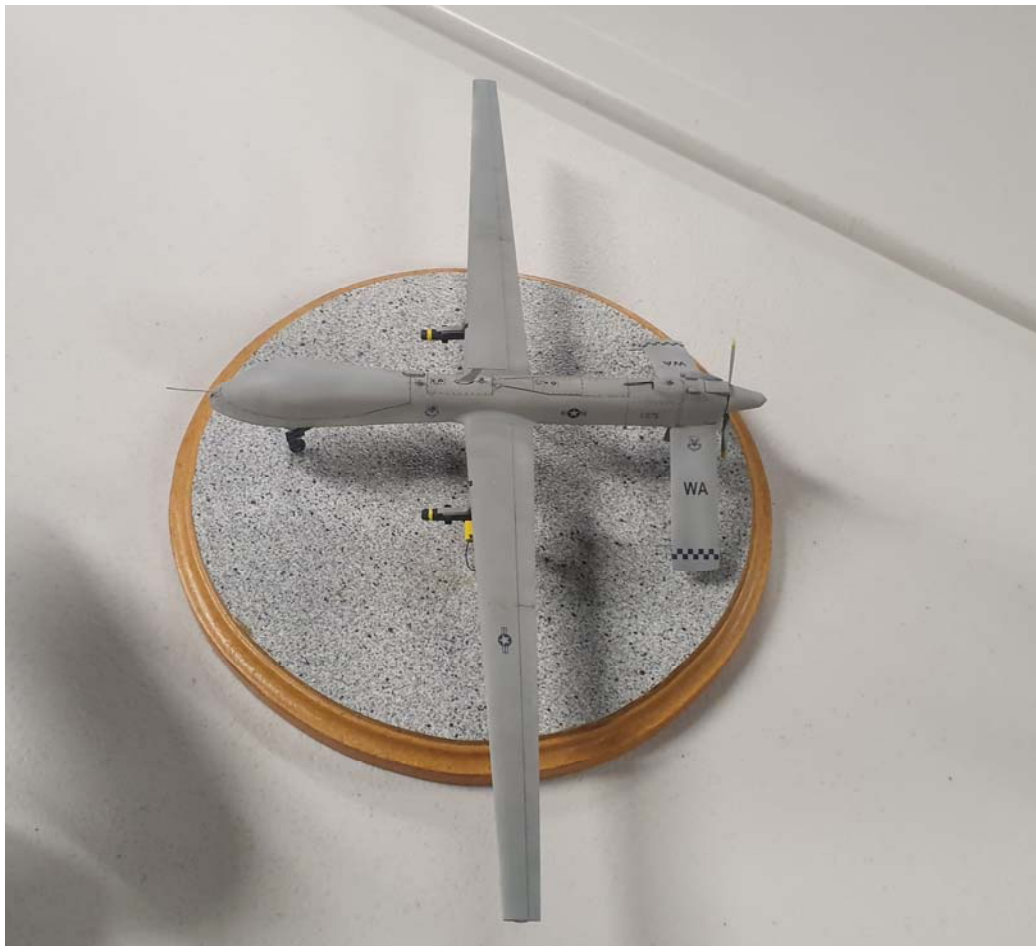
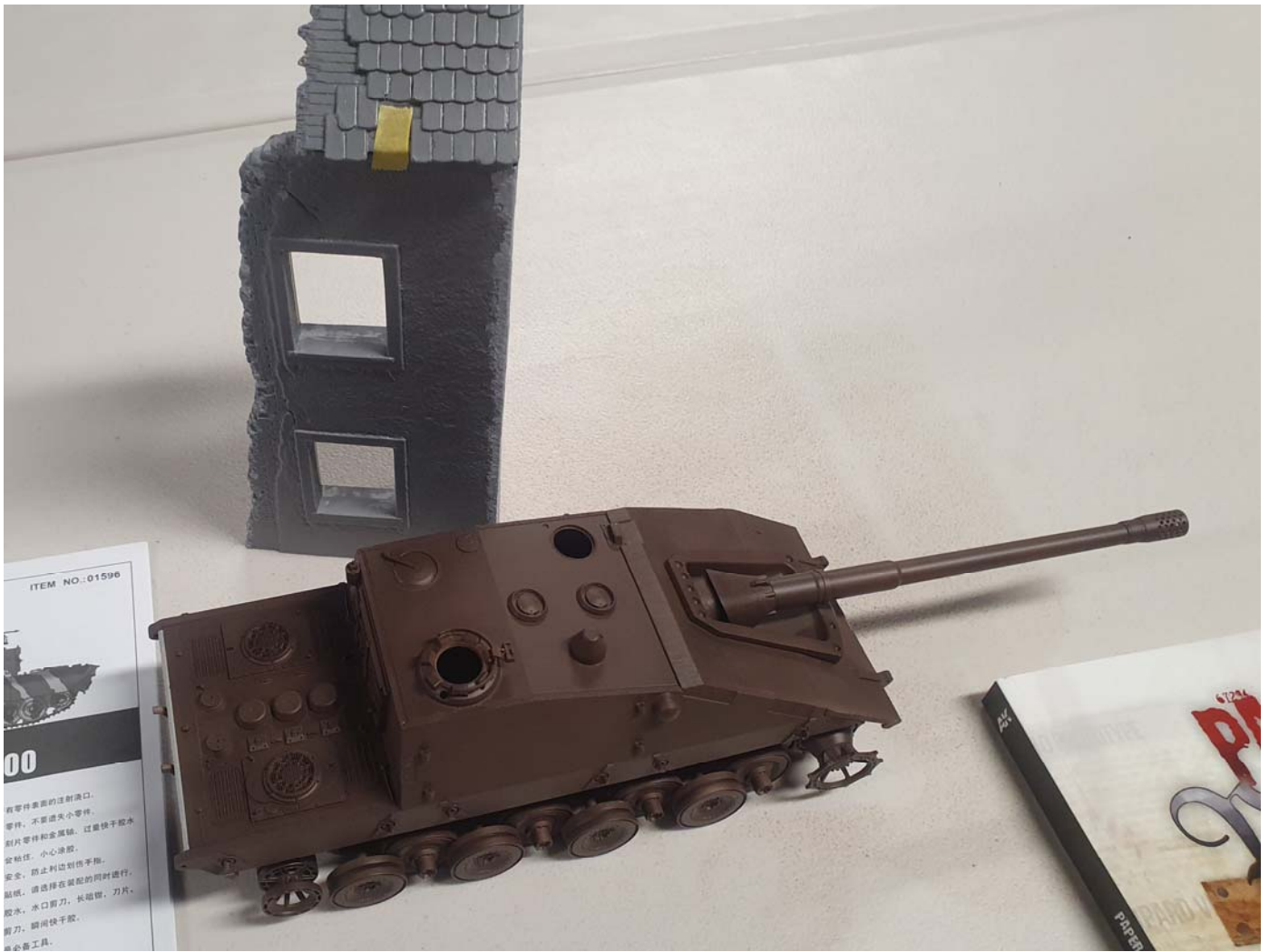




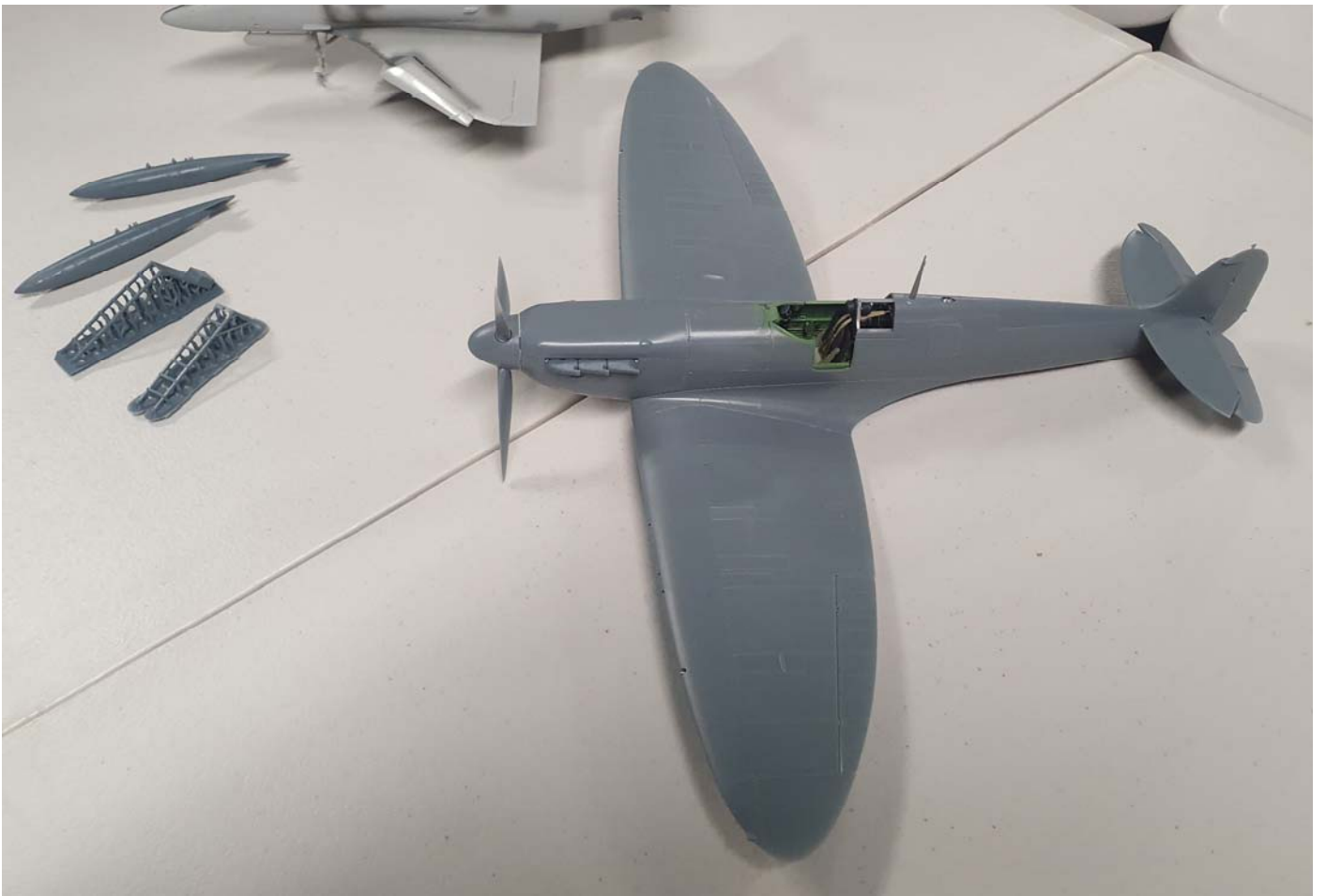


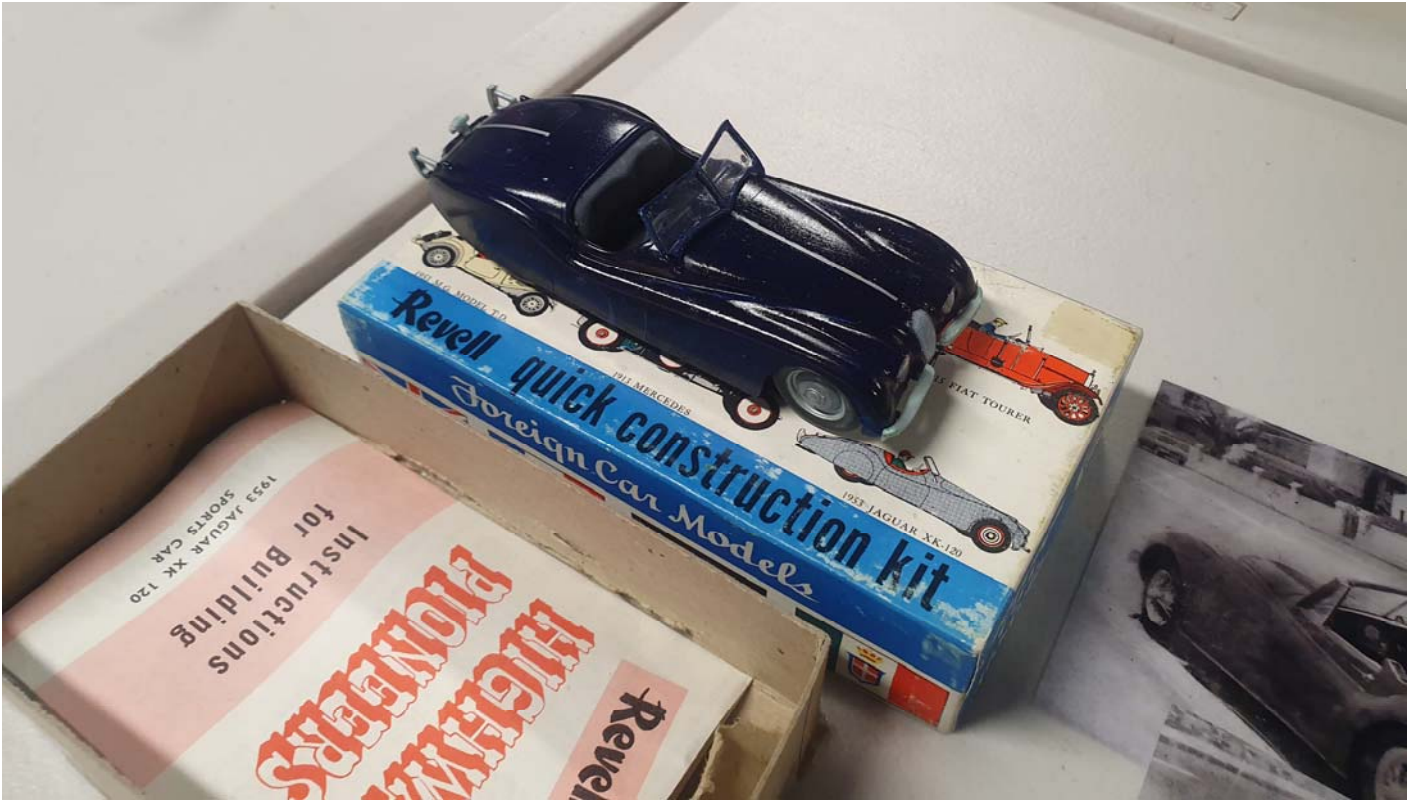












# GALLERY

CLUB NIGHT MODELS

Check out our Website gallery for photos taken of models at our monthly meetings

<http://ipmsauckland.hobbyvista.com>



And as usual -check out the IPMS Auckland website as we're trying to keep the content a bit more dynamic. We won't be regurgitating content found on other websites but will provide links to sites we think are of interest to members.

